

Focus



Focus # 376 on Brooklands Broughton & Broughton Gate

9 issues a year since 1979, not just at election time.
Printed on recyclable paper & distributed by volunteers.

To CONTACT Us

focusteam@live.co.uk

07803 036 656

www.focusteamlive.co.uk



[focusteamlive](https://www.facebook.com/focusteamlive)



[@focusteamlive](https://twitter.com/focusteamlive)



[focusteamlive](https://www.instagram.com/focusteamlive)



Welcome to our new residents, moving into St Lawrence's Fields on Broughton.

WE NEED TO ACT NOW !

Uroy (*below*) is standing on the last 250 metres of Fen Street still to be built. It's to be finished in the late spring next year. Once that's done Fen Street will run for over 2 miles from the A421 near junction 13, through Magna Park, up to the Northfield roundabout by Junction 14.

We need to act quickly to get road safety measures into place as residents have already done at the other end of Fen Street. Uroy's planning a Zoom meeting to get this started. Mail or text him if you'd like to be involved.

focusteam@live.co.uk
07803 036 656



The Festival of Diwali starts on Saturday 14 November. Best wishes to all our Hindu residents from the Focus team, and to our Sikh residents for Bandi Chhorh Divas



NEW FOOTBALL PITCHES

We think these new football pitches (opposite Andromeda Chase at the Fen Street end of Westergate Avenue) are soon to be handed over by Places for People.

But to whom?

Uroy is trying to find out. If it's to 1Life then we need to ensure that local teams get priority to use them particularly the new Veterans team, now having to play down by the station. For more information mail or text Uroy on:

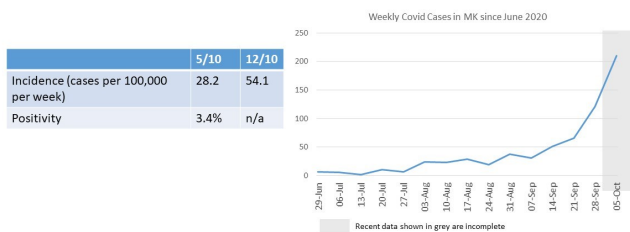
focusteam@live.co.uk
07803 036 656

If you know of anyone who is vulnerable or in need of help at the moment please contact the Council's COVID-19 help line **01908 252398**.



THE VIRUS IN MILTON KEYNES

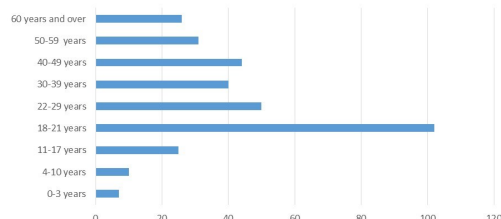
Local Data: Cases



OFFICIAL SENSITIVE 1

OFFICIAL SENSITIVE

Number of cases by age since 21 September 2020



2

Uroy Clarke is the **Focus** Team's expert on the COVID-19 figures in MK. He says we're doubling every eight days at the moment although that may be slightly distorted if - as he believes - students at universities elsewhere in the country are being registered statistically as if at their home address in Milton Keynes.

Under the Government's new framework we're Tier 1 (Medium Risk) at the moment. But at the present rate of infection growth we could be at Tier 2 (High Risk) by mid/late November. For more detail contact Uroy on focusteam@live.co.uk or **07803 036 656**.

THESE ARE THE TIER 1 RULES

- ◆ The rule of six applies - socialising in groups larger than six people is prohibited whether indoors or outdoors.
- ◆ Tradespeople can continue to go into a house to work and are not counted as part of the six-person limit.
- ◆ Businesses and venues can continue to operate but pubs & restaurants must ensure customers only consume food and drink while seated, and close at 10 pm until 5 am.
- ◆ Takeaway food can continue to be sold after 10pm if ordered by phone or online.
- ◆ Schools and universities remain open.
- ◆ Places of worship remain open but people must not mingle in a group of more than six.
- ◆ Weddings & funerals can go ahead with restrictions on the number of people who can attend (15 & 30 respectively).
- ◆ Exercise classes and organised sport can continue to take place outdoors, and – provided the rule of six is followed – indoors.



Uroy, Kerrie & Sam The **Focus** team

We aim to reply to mails, text or calls within 48 hours. Texting's usually fastest. If we don't, please get in touch again in case we've missed your message.

Thank you !