

# Focus



## Focus # 386 on Willen

9 issues a year since 1979, not just at election time.  
Printed on recyclable paper & distributed by volunteers.

## To CONTACT Us

[focusteam@live.co.uk](mailto:focusteam@live.co.uk)

07803 036 656

[www.focusteamlive.co.uk](http://www.focusteamlive.co.uk)



[focusteamlive](https://www.facebook.com/focusteamlive)



[@focusteamlive](https://twitter.com/focusteamlive)



[focusteamlive](https://www.instagram.com/focusteamlive)

## PUBLIC MEETING ON MK EAST

7 pm Tuesday 27 July  
in the Willen Pavilion

Exhibition of the plans from  
4 pm, also in the Pavilion

The developers will be at the meeting to answer questions, as will the Parks Trust.

The exhibition is opening early to give an opportunity of looking at it without too many people being present.

Please consider wearing a mask at the exhibition and meeting.

## QUESTIONS AT THE MEETING

I have been sent lots of questions that people would like to ask - there's a list here:

<https://focusteamlive.co.uk/en/>

If you would like to ask one but are worried about doing so in a public meeting, or not able to attend, I can ask it for you. Let me know on:

[focusteam@live.co.uk](mailto:focusteam@live.co.uk)

07803 036 656



Campbell Park Parish Council conducted a survey of all Willen residents about MK East earlier this year.

They'll be presenting their results at the meeting. For a preview, see their website:

<https://www.campbell-park.gov.uk/milton-keynes-east-development/>

## TRAFFIC CALMING MEASURES WITHIN WILLEN

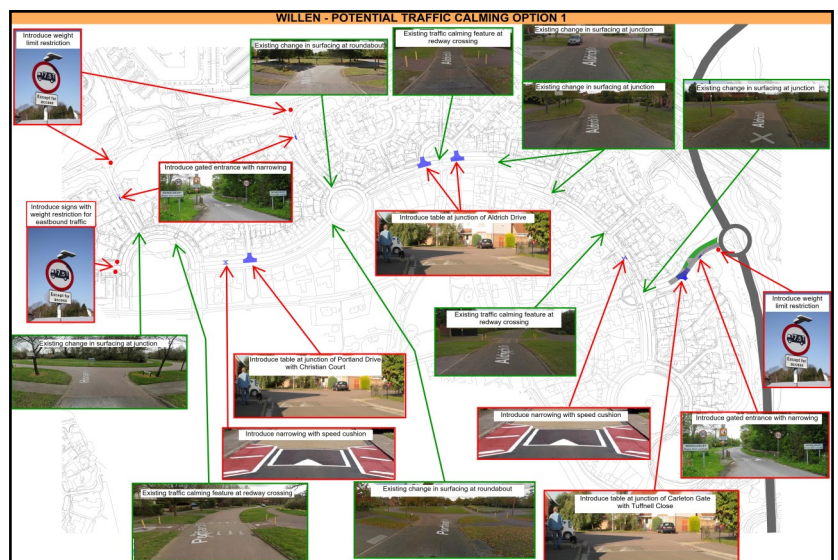
Top concern for the respondents to the Parish Council's survey was the likelihood of increased traffic volumes on estate roads within Willen. The developers have put forward three proposals to prevent this, as below & overleaf:

### OPTION 1

Assumes a roundabout is provided at the junction of Tongwell Street with Carleton Gate.

Introduces weight restriction and traffic calming through the eastern part of the estate.

These include a give-way section at entrances into the estate from Hooper Gate, Millington Gate and Carleton Gate.



If you know of anyone who is vulnerable or in need of help at the moment please contact the Council's COVID-19 help line **01908 252398**.

### OPTION 2

Assumes a roundabout is provided at the junction of Tongwell Street with Carleton Gate.

Introduces weight restriction & traffic calming measures through the eastern part of the estate.

These include a residential gate-way at entrances into the estate from Hooper Gate, Millington Gate and Carleton Gate and the introduction of a 20 mph speed limit.

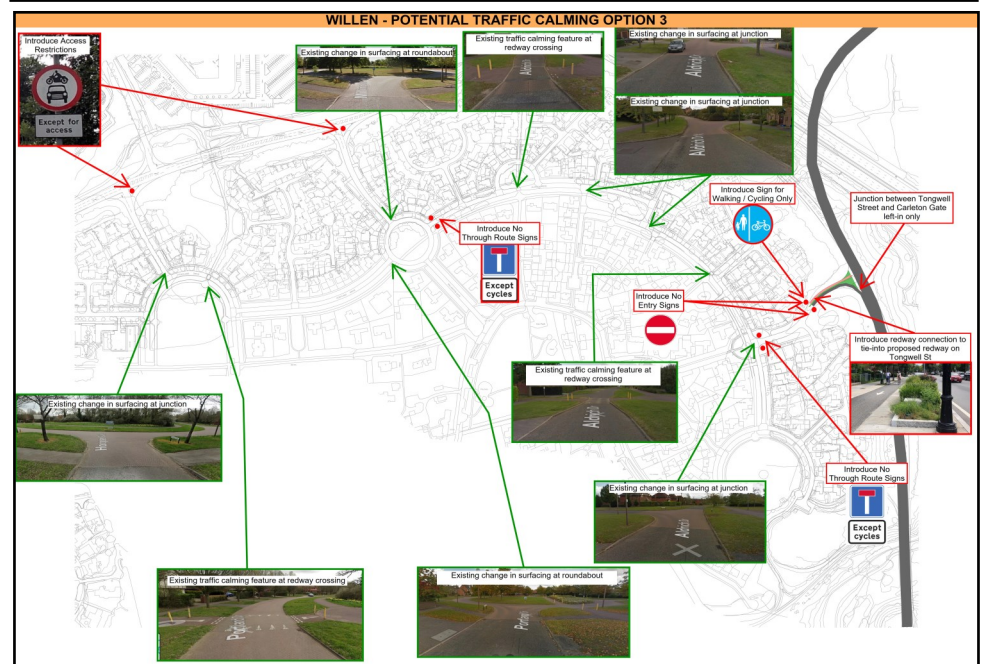


### OPTION 3

Assumes a left-turn in only is provided at the junction of Tongwell Street with Carleton Gate.

The developer will ask at the meeting which of these three schemes would be most acceptable to residents.

Also, at the exhibition, there will be a proposed connectivity plan with redway & pedestrian routes from Tongwell round about to Brooklands, including Coachway.



Milton Keynes Council are offering more-than 100,000 hours of **FREE** activities this summer for children and young-people. More information here:

<https://www.milton-keynes.gov.uk/children-young-people-families/holiday-activities-and-food-programme-haf>

**Sam, Kerrie & Uroy**  
**The *Focus* team**

We aim to reply to mails, text or calls within 48 hours. Texting's usually fastest. If we don't, please get in touch again in case we've missed your message.

**Thank you !**

