

Focus



Focus # 388 on Oakgrove

9 issues a year since 1979, not just at election time.
Printed on recyclable paper & distributed by volunteers.

To CONTACT Us

focusteam@live.co.uk

07803 036 656

www.focusteamlive.co.uk



[focusteamlive](https://www.facebook.com/focusteamlive)



[@focusteamlive](https://twitter.com/focusteamlive)



[focusteamlive](https://www.instagram.com/focusteamlive)

HEROES ALL !

Thank you and congratulations to Gwen & John Corbett, Colin Dexter and Dave Jones who went from door to door on Phases 3 - 5 collecting 97 signatures on a petition for Crest to cut the grass. They sent it to Crest's Chief Executive and also attended meetings of the Parish Council and Milton Keynes Council to put their case. Thanks also to all the residents who signed our on-line petition.

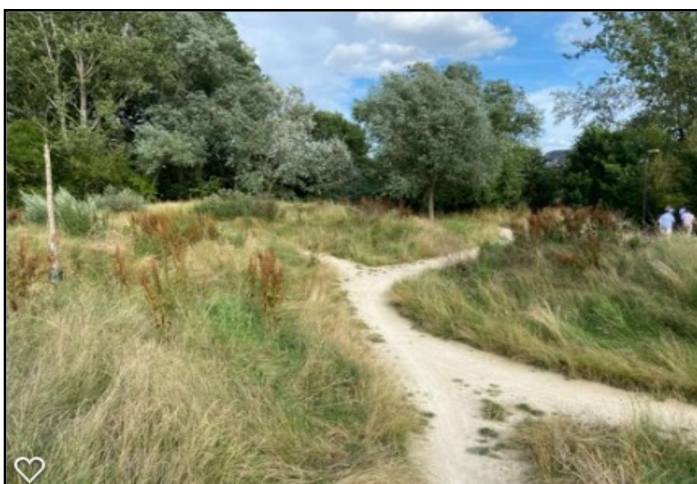
Now Crest have given in. Here's what they've said:

"We apologise to the residents for the delay in finalising the landscape and maintaining the completed area at Oakgrove. We have since completed the preliminary works on site and are in the final stages of onboarding a contractor to support with regular maintenance of the landscaping services at the development."

We have to keep the pressure up. Here are Crest's Customer Service email address and telephone number. Please keep on at them !

customerservicech@crestnicholson.com

0333 136 0360

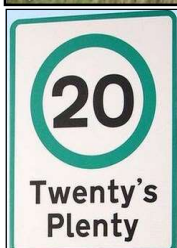


CYCLE TRACK TO BE RE-DONE

After 18 months (!) doing nothing, Crest have taken up the Council's offer to bring in its own contractors to remodel and resurface the track so as to bring it up to a useable standard (in fact exceeding the original design in terms of usability and play).

We are in the process of obtaining quotes for this, for which Crest will pay. As soon as we have a timetable for completion we'll post it on facebook.

Thank you to all the residents who signed our petition to help make this happen.



Thank you to everyone who responded to our poll about a 20 mph limit on Oakgrove roads. **76%** of you said **YES** certainly at least on Atlas Way, Harvard Way, and Gambit Avenue linking with Middleton.

We'll take this up with the Council and Thames Valley Police.

The poll is still open. Here's the link & QR code <http://ftl.lib.dm/o01r>

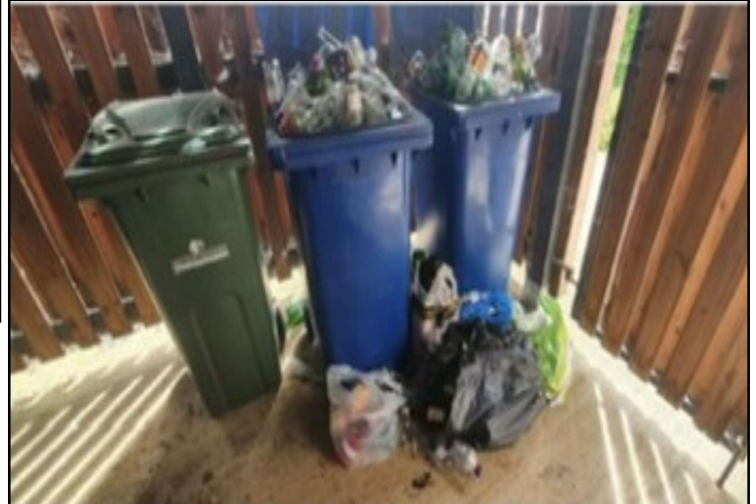


If you know of anyone who is vulnerable or in need of help at the moment please contact the Council's COVID-19 help line **01908 252398**.



STREET SIGN ON BERRY GROVE

There's a sign for numbers 2 - 8 but not for 1 - 5. We've asked Crest to put one up.



HOLLERITH CLOSE LIGHTS

The street lights for Hollerith Close have been unconnected for months. We've asked Crest to get them working as soon as possible. The Council's also asked, as there's a safety is-



GLASS COLLECTIONS

SERCO apologise for the recent problems with glass collections. This arises from a shortage of drivers which means that some of their lorries can't be driven and smaller vans have to be used for the collections. That causes delays as they can't pick up as much as the lorries.

Basically SERCO are prioritising black and recycling sacks, then green bins, and finally glass.

We've notified them of all the flats that we know about - they're considering a special weekend collection to catch up. Let us know if you've still got a problem:

focusteam@live.co.uk
07803 036 656



We're doing a poll on our website.

Would you support (or not) double yellow lines by the bend on Atlas Way opposite Morse House & Eclipse Avenue.

Here's the link & QR code

<http://ftl.lib.dm/o81r>



Sam, Kerrie & Uroy The *Focus* team

We aim to reply to mails, text or calls within 48 hours. Texting's usually fastest. If we don't, please get in touch again in case we've missed your message.

Thank you !

