

Happy New Year! **Focus**

**Focus #399 on Brooklands,
Broughton & Broughton Gate**

9 issues a year since 1979, not just at election time.

Written by Kerrie Bradburn



To CONTACT Us

focusteam@live.co.uk

07803 036 656

www.focusteamlive.co.uk



focusteamlive



@focusteamlive



focusteamlive

Tanfield Lane



At the time of writing we are still waiting for the **yellow lines** on Tanfield Lane to be put down. The snow and ice before Christmas delayed the works but we hope that the lines will be installed early in 2023.

The **potholes on the Middleton side** of the bridge have now reached the council's intervention level and are scheduled to be fixed.

Pavilions

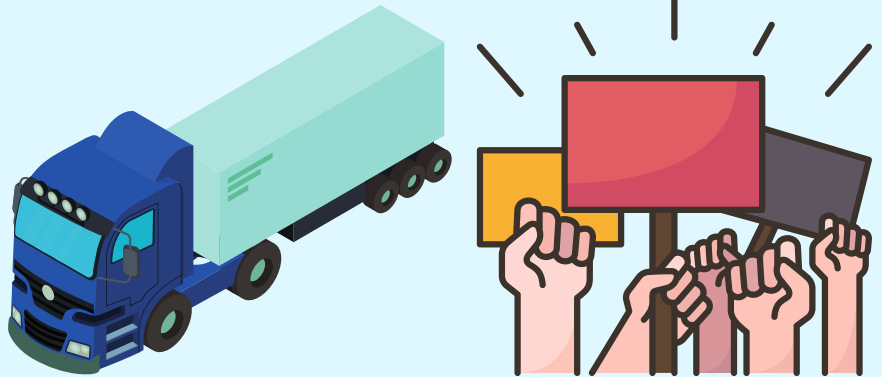
Both **Brooklands** and **Broughton** Pavilions are now fully open and are taking bookings.

Broughton is run by the Parish Council whilst MK Dons SET (Sport and Education Trust) run Brooklands. For contact details email/text us:

focusteam@live.co.uk

07803 036 656

Opening of Fen Street



The issue of **lorries parking at the dead end of Fen Street** (Magna Park end) continues. The Christmas period increased the number of lorries present. Whilst we have sympathy with the drivers who have limited facilities in the local area, **the situation needs resolving**. PFP are not forthcoming with a confirmed date for the opening of Fen Street (which would remove the parking problem completely). Kerrie wonders if we need to start a picket in order to get something done! Let her know if you'd be willing to **join a protest** one Saturday morning and we'll arrange it:

focusteam@live.co.uk

07803 036 656

Traffic/Speeding

Residents and a representative from the Police attended a meeting in Brooklands about traffic management and speeding as a result of **Kerrie's letter to the local superintendent in November**.

One of the action points is for us to find out how to fund new equipment to revive the Community Speed Watch group.



If you'd like to see the full notes and outcomes from the meeting please email us and we'll send you a copy.

focusteam@live.co.uk

07803 036 656

The Lib Dem **Focus** Team

Working & keeping in touch all year round

Voter ID and Elections

Despite much opposition, it has now been confirmed by the government that photo ID will be required for voting in elections from now on. The first election these changes will impact will be the May 2023 Local Elections. Please email us if you'd like to know the full list of acceptable identification documents to ensure you can vote. Postal votes remain the same, so if you're worried you don't have correct ID we suggest applying for a postal vote to ensure you're not disenfranchised! Email/text us and we can help with applying.

focusteam@live.co.uk
07803 036 656



Budget

Consultation

The Council is consulting on its draft budget for 2023/2024.

Email/text us for a copy of the draft and instructions on how to comment:

focusteam@live.co.uk
07803 036 656

Have your say on our draft budget

Support
for local
people in
tough
times

Investing in our
local economy
to ensure good
jobs and secure
employment

Providing
value for
money,
cutting waste
not services

We're consulting
until 31 January

 Milton Keynes
City Council

Cost of living support from the council

The Council has a number of different resources/packages in place to help with the cost of living crisis. Please let us know if you'd like us to forward you on their leaflet containing all of the information relating to this.

focusteam@live.co.uk
07803 036 656

Newest member of the team!



My husband and I were delighted to welcome our second daughter, Daphne, into the world on Sunday 6th November. We are all doing well adjusting to being a family of 4. Thank you to everyone who sent well wishes. Beatrice is loving being a big sister!

Kerrie, Uroy & Sam

The Lib Dem **Focus** team

We aim to reply to mails, text or calls within 48 hours. Texting's usually fastest. If we don't, please get in touch again in case we've missed your message.

Thank you !



Stronger Economy, Fairer Society

Opportunity for Everyone