

# Safer, Greener, Fairer, Cleaner



## Wheelie Bins

- Campaigned for a wheelie bin trial in 2019
- Bins to be rolled out to most households this summer
- Will reduce our litter problem by up to 45%



## Road safety

- We've succeeded on Oakgrove in getting an estate wide 20mph speed limit
- Still campaigning for a speed limit enforcement on Fen Street
- £1million secured to mitigate the impact of MK East



## Estate Handover Campaign

- Persuaded the council to set up a working group on adoptions
- Keeping pressure on developers to maintain and look after our new estates before they're handed over to the council



Stick this poster in your window to show your support!

On May 4th

Vote Kerrie

&



The

FOCUS

Team

# Focus

#401 on Broughton Ward  
Brooklands, Broughton, Broughton Gate  
Middleton, Milton Keynes Village, Oakgrove,  
Willen & Willen Park

Printed on recyclable paper & delivered by volunteers.

## Listening Caring Working



### BRADBURN, Kerrie





# Voting at the polling station now requires Photo ID



What ID will be accepted at the  
polling station?

- ✓ Passport
- ✓ Driving Licence
- ✓ Other forms of Photo ID including some concessionary travel passes or a Free Voter Authority Certificate

## No ID?

Apply for a **FREE**  
Voter Authority  
Certificate here:



[www.gov.uk/apply-  
for-photo-id-  
voter-authority-  
certificate](https://www.gov.uk/apply-for-photo-id-voter-authority-certificate)

Published and promoted by Robin Bradburn on behalf of the Liberal Democrats at 51 Brill Place, Bradwell Common, Milton Keynes, MK13 8LU. Printed by Solopress, 9 Stock Road, Southend on Sea, Essex SS2 5QF. If you reply to this leaflet, the Liberal Democrats, locally and nationally, may use the information provided, including your political views, to further our objectives, to share with our elected representatives and/or contact you in future using any of the means provided. Some contacts may be automated. You may opt out of some or all contacts or exercise your other legal rights by contacting us. Further details are in our Privacy Policy at [www.libdems.org.uk/privacy](https://www.libdems.org.uk/privacy)

## Kerrie and The LibDem *Focus* Team Work Hard and Keep in Touch All Year Round



We  
regularly  
survey  
residents.



HGV limits  
implemented  
across our  
estates



We run a monthly litter  
pick on Oakgrove.



Kerrie persuaded the  
Council to change to  
wheelie bins



Kerrie will continue  
holding developers to  
account when it comes to  
maintaining our estates.



Kerrie won't give up on  
reducing Fen Street  
speeding



**Kerrie says...**

I love being a ward councillor. I want to continue working for residents as I have been since I became a member of the Focus team in 2015.

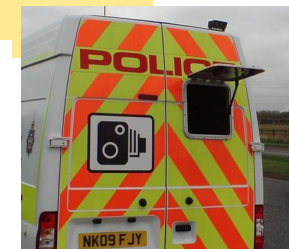
We're visible, we're easily contactable and we're here to help. Please re-elect me on May 4th to continue representing the best ward in MK!

✓ We publish 9 editions of Focus a year, not just at election time

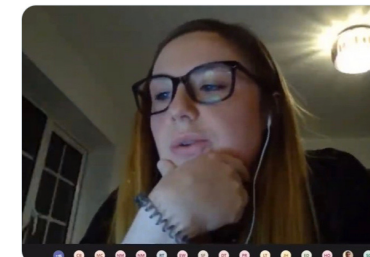
✓ We always focus our efforts on your priorities

✓ We're always honest about what we can achieve and where we can help

**Milton Keynes Lib D...** 24/02/2021  
Cllr @KerrieCherie thanks Cllr Marland for accepting the capital amendment which means that while MK East is being built east of the M1, a fund will be available to help reduce impacts on residents living in existing estates which border it, Broughton, Willen and Brooklands.



Kerrie and the team will keep making the case for more schools & health facilities as well as new housing. We need more housing but not at the expense of people already here.



### Contact Kerrie:



[focusteam@live.co.uk](mailto:focusteam@live.co.uk)



07803 036656



[focusteamlive](https://www.facebook.com/focusteamlive)



[@focusteamlive](https://twitter.com/focusteamlive)



[focusteamlive](https://www.instagram.com/focusteamlive)